

1. **EXPLORATION LICENCE EL6913**

A letter has been received from Magmatic Resources Limited informing Council of the existence of granted Exploration Licence EL6913 (Tenement) **(See Attachment No. 1)**.

RECOMMENDATION

That the information be noted.



MAGMATIC RESOURCES

21 February 2018

General Manager
Narromine Shire Council
PO Box 115
Narromine NSW 2821

By email: mail@narromine.nsw.gov.au

Dear Sir/Madam,

EXPLORATION LICENCES IN NARROMINE COUNCIL

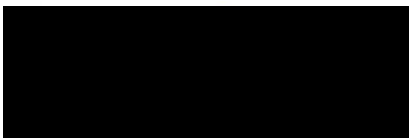
As a courtesy, I am writing to inform you of the existence of granted Exploration Licence EL6913 (Tenement) which falls within the Narromine Shire Council boundaries and is held by Modelling Resources Pty Ltd, a wholly owned subsidiary of Magmatic Resources Limited. Please see the attached diagrams for the location of the Tenement.

A proposed work programme for the Tenement is being finalized, but may include activities such as ground sampling, geophysical programmes, various drilling programmes, and/or aerial surveys (helicopter or fixed wing).

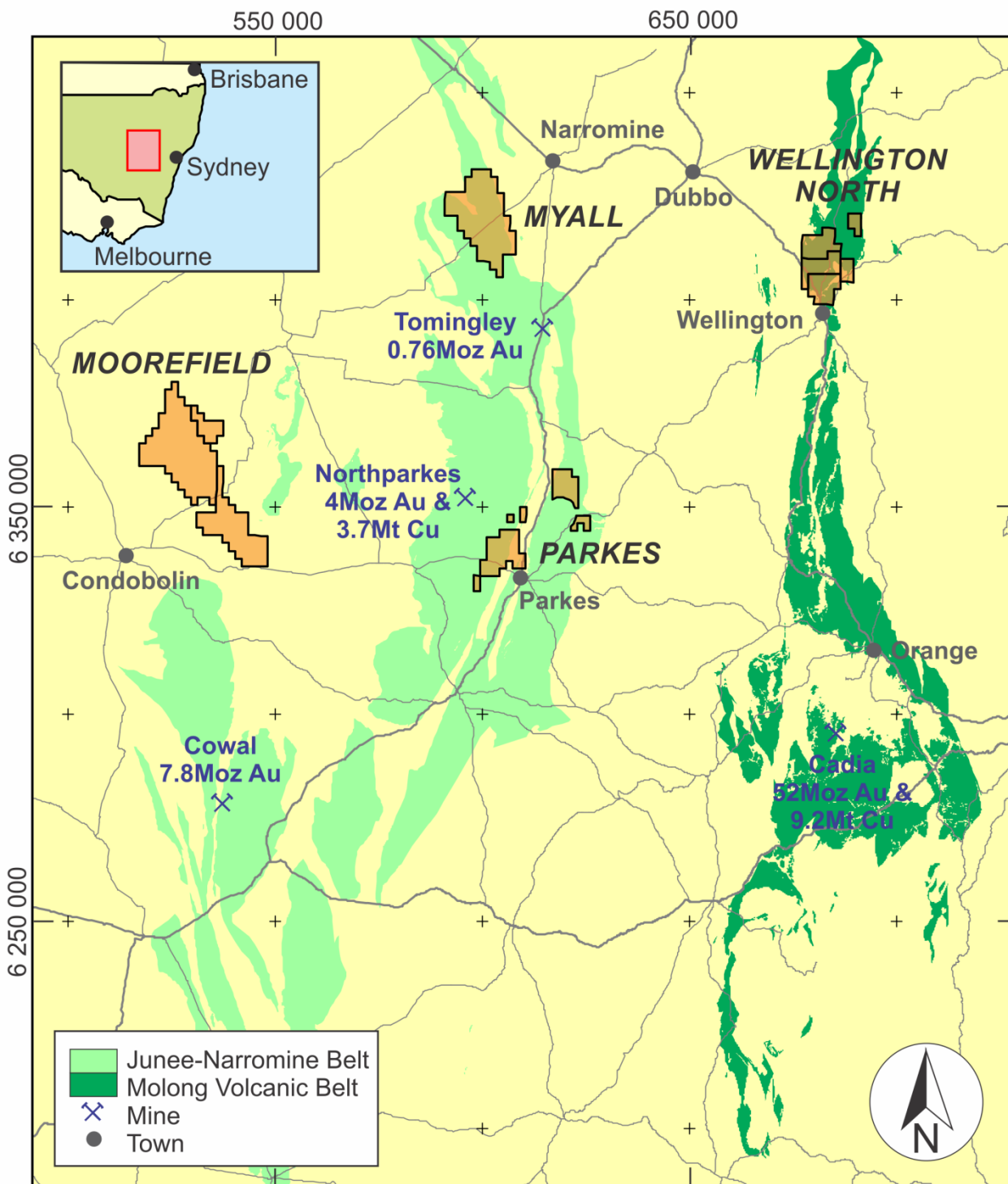
Information about these licences can be provided by contacting Magmatic Resources Limited on 08 6102 2709 or at <https://magmaticresources.com/projects/>.

Information on land holders rights can be found at <http://www.resourcesandenergy.nsw.gov.au/landholders-and-community>.

Yours sincerely,



Steven Oxenburgh
Exploration Manager
Magmatic Resources Limited



MGA94 Zone55

EL6913

